

Africa



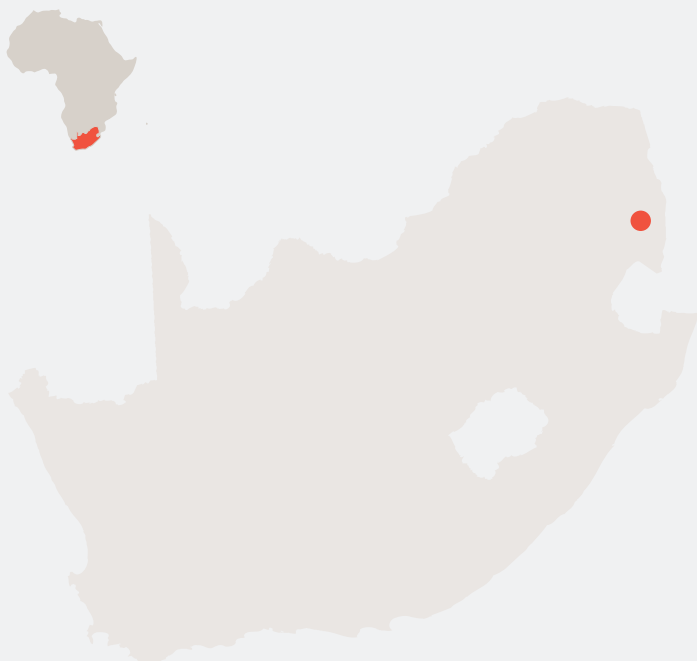
&BEYOND

KIRKMAN'S KAMP

Sabi Sand Game Reserve



SOUTH AFRICA



Adjacent to the world renowned Kruger National Park, the Sabi Sand Game Reserve is famed for its intimate wildlife encounters, particularly leopard viewing. Home to a host of animals, including the Big Five (lion, leopard, elephant, buffalo and rhino), the Sabi Sand is part of a conservation area that covers over two million hectares (almost five million acres), an area equivalent to the state of New Jersey.

With no boundary fences between the Sabi Sand and the Kruger National Park, this reserve benefits from the great diversity of animals found in one of the richest wildlife areas on the African continent, along with the additional benefits experienced on a private game reserve.

Game drives traverse an area of 6 300 hectares (15 568 acres) and strict vehicle limits at sightings ensure the exclusivity of the game viewing experience. Sensitive off-road driving ensures that guests have the best possible view of any exceptional sighting and rangers are constantly in touch with each other to keep track of animal movements.

{Kirkman's Kamp}

www.andBeyond.com



The spirit of safari comes alive at historic **&Beyond** Kirkman's Kamp. Step back in time into the gracious early Transvaal atmosphere of this original 1920s homestead and marvel at the spectacular views of the unspoiled landscape that surrounds the Sand River from each of the 18 guest suites. Rolling lawns carve out a niche in a wild and tumbling wilderness that host memorable game viewing in one of the most renowned Big Five wildlife regions in the world. Spacious sitting, dining and bar areas steeped in the colonial atmosphere of gracious style and luxury contain mementoes of a time long past, while the untamed wilderness outside whispers a promise of adventures not to be forgotten. A sparkling swimming pool boasts a magnificent view over the valley of the Sand River.

AT A GLANCE

- 18 air-conditioned suites
- Private verandas
- Rim-flow lodge swimming pool with a view
- Open-air boma
- Safari Shop
- Exceptional family atmosphere and children's programme

WHAT SETS US APART

- Gracious and genteel lodge imbued with the history of Harry Kirkman
- Relaxed and social family atmosphere
- Famed for leopard sightings
- Big Five game reserve shares unfenced borders with the Kruger National Park
- Traversing 6 300 hectares (15 000 acres)
- Wildlife includes leopards, spotted hyena, various antelope, elephant, white rhino, buffalo, hippo

ACTIVITIES

Included

- Early morning and late afternoon / evening game drives in open 4x4 safari vehicles
- Interpretive bush walks
- Birdwatching

At an additional charge

- Luxury walking safaris

ACCESS

- Daily Airlink flights from Johannesburg to Skukuza airstrip, followed by an easy drive to camp
- Connect **&Beyond** Kirkman's Kamp to: Johannesburg, Cape Town, **&Beyond** Ngala Private Game Reserve, **&Beyond** Phinda Private Game Reserve, Vilanculos and Livingstone. All flights route through either Nelspruit or Skukuza.
- Five-hour drive from Johannesburg on good roads in a two-wheel drive vehicle



GUEST SAFETY

The camp is not fenced off and we request guests be extremely vigilant at all times. Security guards accompany guests at all times when walking around the camp at night.

ACCOLADES



2016 - **&BEYOND** KIRKMAN'S KAMP IS LISTED AMONGST THE TOP 10 OF TRAVEL & LEISURE'S BEST SAFARI LODGES IN AFRICA



2015 - **&BEYOND'S** LODGES IN THE SABI SAND GAME RESERVE LISTED AMONG THE TOP 100 HOTELS & RESORTS IN THE WORLD AT THE CONDE NAST TRAVELER (US) READERS' CHOICE AWARDS AND FEATURED AMONG THE TOP 12 RESORTS IN SOUTH AFRICA



2014 - **&BEYOND'S** SABI SAND LODGES ARE LISTED AT # 55 IN CONDE NAST TRAVELER "BEST IN THE WORLD" TOP 100 HOTELS, ISLAND, CITIES, CRUISES AND AIRLINES



2014 - **&BEYOND** IS HONOURED IN CONDE NAST TRAVELER TOP 20 SAFARI LODGES AND CAMPS IN AFRICA AFRICA & MIDDLE EAST CATEGORY, WITH ITS SABI SAND LODGES RATED # 6

"We LOVE, LOVE, LOVED Kirkman's Kamp! The safari itself exceeded our expectations! The lodge, staff and game viewing was phenomenal! We loved the social aspect of Kirkman's and the laid back feel to the lodge. I had a hard time leaving – it truly felt like home."

-Greta Tinay, &Beyond guest

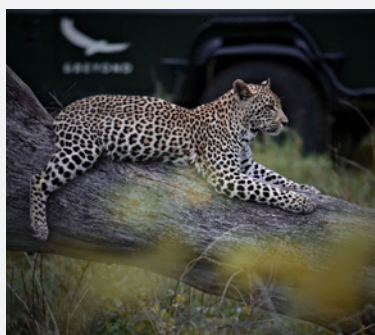


TABLE OF FACTS

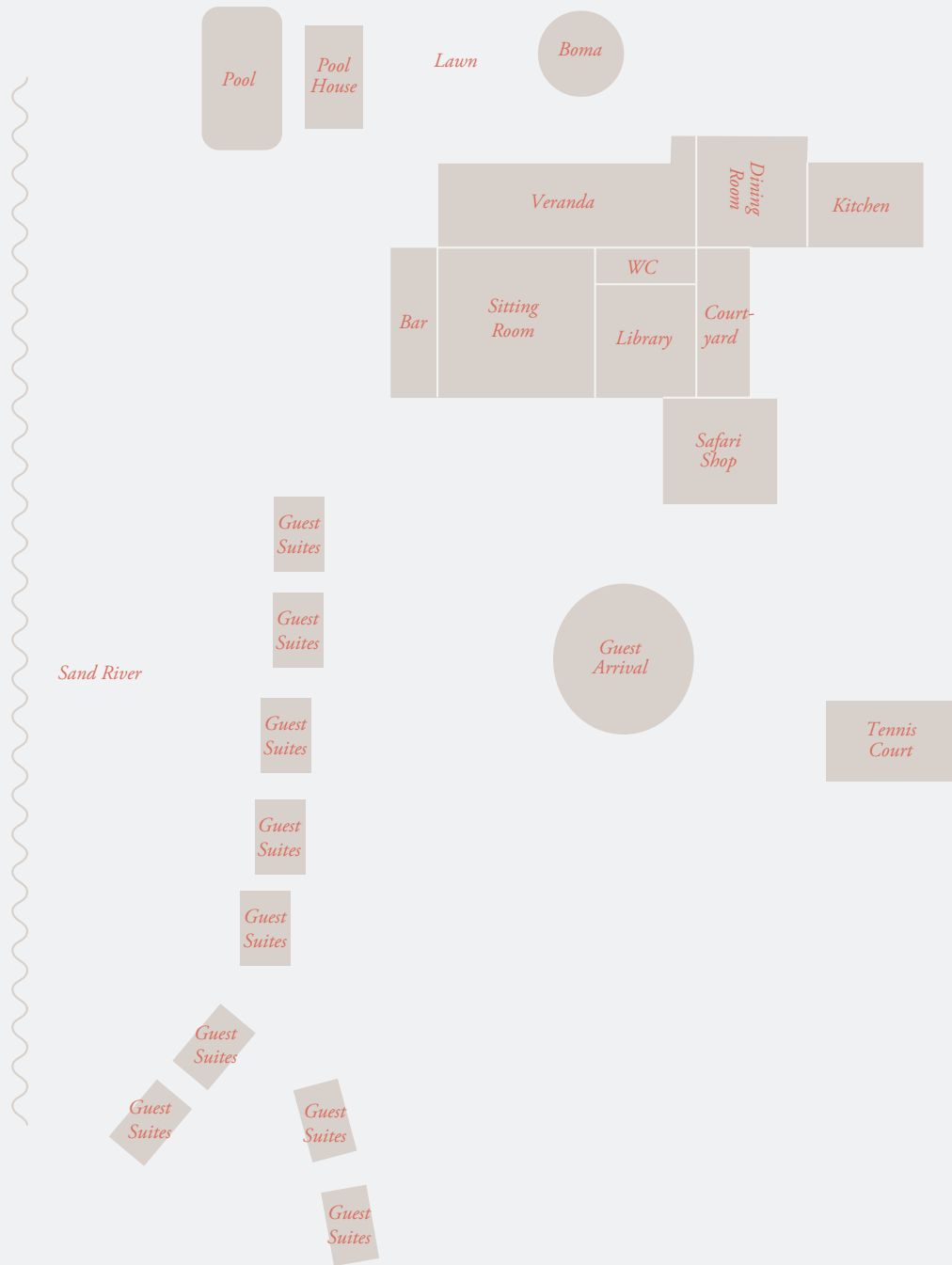
NUMBER OF ROOMS	18
MAXIMUM GUESTS	36
CHILDREN	Children 5 years and younger cannot participate in game drives; children aged 6 to 11 permitted on game drives at lodge managers discretion
CHILDMINDING	Yes, at an additional cost
TRIPLES	2 (children 16 years and younger)
TWIN BEDS	All convertible to double
GUIDE'S ACCOMMODATION	Available
AIR CONDITIONING	Yes
OVERHEAD FANS	Yes
BATH	Yes
INDOOR SHOWER	Yes
IN-ROOM SAFE	Yes
PERSONAL BAR	Yes
TELEPHONE	Yes
HAIRDRYER	Yes
LAUNDRY INCLUDED	Yes
WHEELCHAIR ACCESS	Yes, with assistance, but not recommended
CHECK IN / CHECK OUT	12h00 – 14h00 / 11h00
KOSHER FOOD	Available with prior notice and at extra cost
POWER	220v AC
INTERNET ACCESS	Yes, wifi in suites and guest area
PRIVATE 4X4 SAFARI VEHICLE	Dependent on availability and at extra cost
CREDIT CARDS	Visa, Diners, Amex, MasterCard

MASSAGE	Yes; in-room or or at the wellness centre
WEATHER	Summer months (November to March) are hot and humid. Temperature start to cool slightly in April and the winter months (May to June) are warm with cold nights. July to September is very dry, with cold night and early morning / late afternoon temperatures. Spring (September to October) is very dry, with hot winds.
RAINFALL	The rains start towards the end of October. November to March can experience rains and typical afternoon thundershowers, which start to lessen in April.
TEMPERATURE	Summer: 12°C to 38°C / 55°F to 100°F Winter: 3°C to 32°C / 32°F to 90°F
BEST TIME TO TRAVEL	All year round, with optimum game viewing from March to October
ALTITUDE	423m / 1 388ft above sea level
MALARIA	The camp is situated in a malaria area and necessary precautions should be taken
AIRSTRIP	The camp is served by Skukuza Airstrip
GPS COORDINATES	S 24° 56.088' E 031° 33.559'
LODGE CLOSURE	Open year round

NOTE

- Please note that park fees and government charges may apply. Speak to your travel consultant for more details.
- Drones are not permitted at **&Beyond** Reserves and Lodges.

CAMP LAYOUT



CONTACT